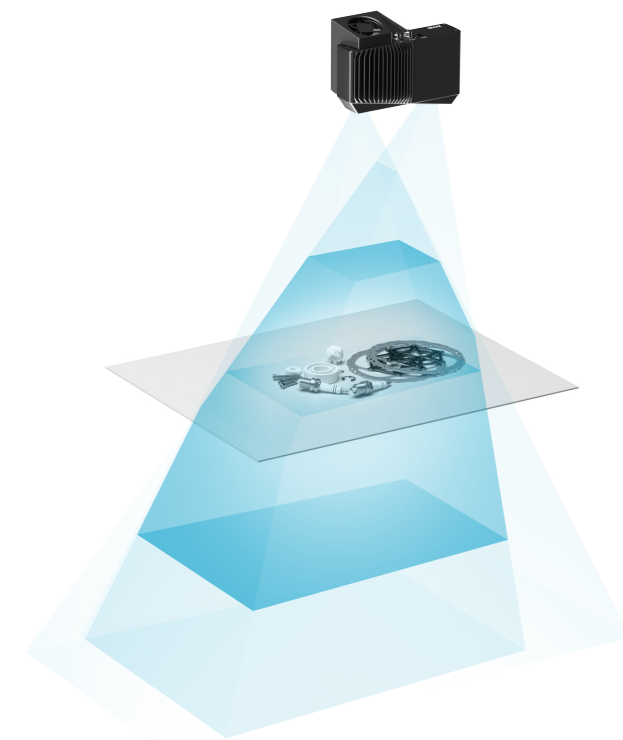


# Zivid One+ Small

For highly detailed, tiny objects at close range



**Optimal Range**

0.35 - 0.7 m



**Precision/  
z-noise**

0.03 mm @ 0.3 m  
<0.2 mm @ 1.0 m



**Maximum Range**

1.0 m

# Zivid One+ Medium

For small to medium objects, versatile range



**Optimal Range**

0.7 - 1.5 m



**Precision/  
z-noise**

0.07 mm @ 0.6 m  
<1.0 mm @ 2.0 m



**Maximum Range**

2.0 m

# Zivid One+ Large

For medium to large objects at longer ranges



**Optimal Range**

1.3 - 2.6 m



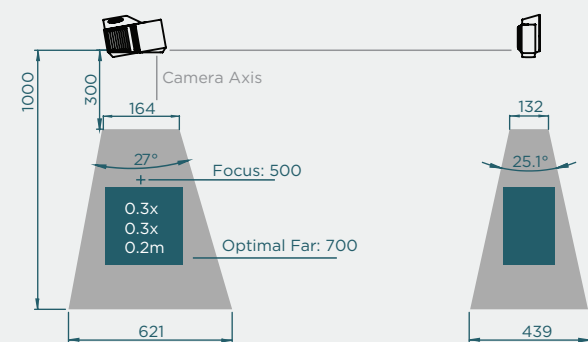
**Precision/  
z-noise**

0.3 mm @ 1.2 m  
<2.0 mm @ 3.0 m



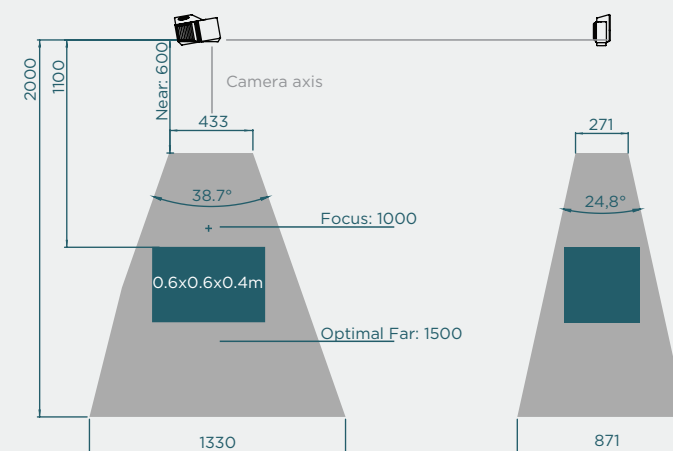
**Maximum Range**

3.0 m



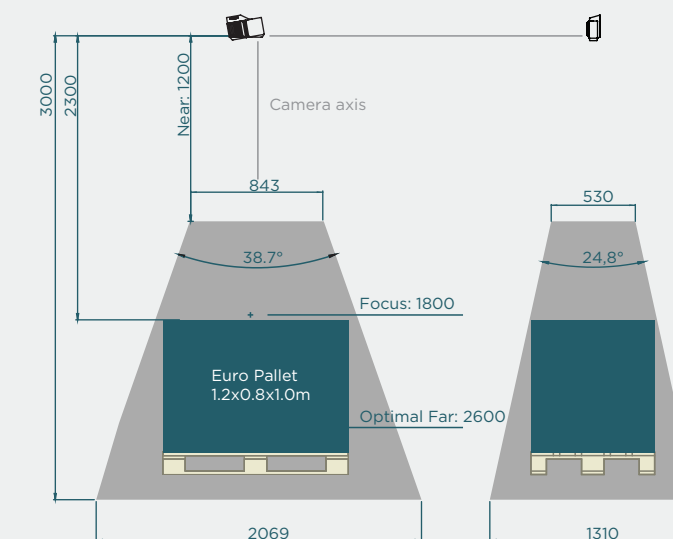
## Small

- Objects on tables, in trays or boxes
- Picking, inspection and verification applications



## Medium

- Objects on tables, in standard totes or bins
- Picking, assembly, and control applications



## Large

- Objects on floor or standard EU/US pallets
- Picking and handling, de-palletizing

3D Camera Specifications

Airtight and intelligent cooling

Active lighting for textureless objects



High Definition Full RGB 3D

High Dynamic Range rapid electronic iris

	Small	Medium	Large
Optimal Range (m)	0.35 - 0.7	0.7 - 1.5	1.2 - 2.6
Maximum Range (m)	1.0	2.0	3.0
FOV (mm)	164 x 132 @ 0.3 m 621 x 439 @ 1.0 m	433 x 271 @ 0.6 m 1330 x 871 @ 2.0 m	843 x 530 @ 1.2 m 2069 x 1310 @ 3.0 m
Spatial Resolution (mm)	0.12 @ 0.3 m 0.40 @ 1.0 m	0.23 @ 0.6 m 0.75 @ 2.0 m	0.45 @ 1.2 m 1.11 @ 3.0 m
Precision / z-noise (mm)	0.03 @ 0.3 m <0.2 @ 1.0 m	0.07 @ 0.6 m <1.0 @ 2.0 m	0.3 @ 1.2 m <2.0 @ 3.0 m
Acquisition Rate	13 Hz (full resolution 3D burst)		
Output	3D (XYZ) + Color (RGB) + Contrast (C) for each pixel. Native .zdf format. Export to (un-)ordered .ply / ASCII / .pcd		
Resolution	HD (2.3 Mpixel) 1920 x 1200		
Imaging	Color, 3D HDR, Reflection and noise filters		
Simplicity	Factory-calibrated 3D camera, fast and intuitive GUI. Modern and high level API.		
Software	Zivid SDK (C++ / C# / .NET) Zivid Studio		
OS	Windows 10 Ubuntu 16.04 / Ubuntu 18.04 / Ubuntu 20.04		
Physical Interface	USB3.0 SuperSpeed 24 V DC		
Dimensions and weight	226 x 165 x 86 mm 2 kg		
Environmental	Shock: IEC 60068-2-27:2008 10-40°C / IP65 aluminum housing		
Safety and EMC	CE / EN60950 / CB / FCC class A		

All product, product specifications and data are subject to change without notice to improve reliability, function or design or otherwise.

Contact Zivid

Gjerdrums vei 10A  
N-0484 Oslo  
Norway

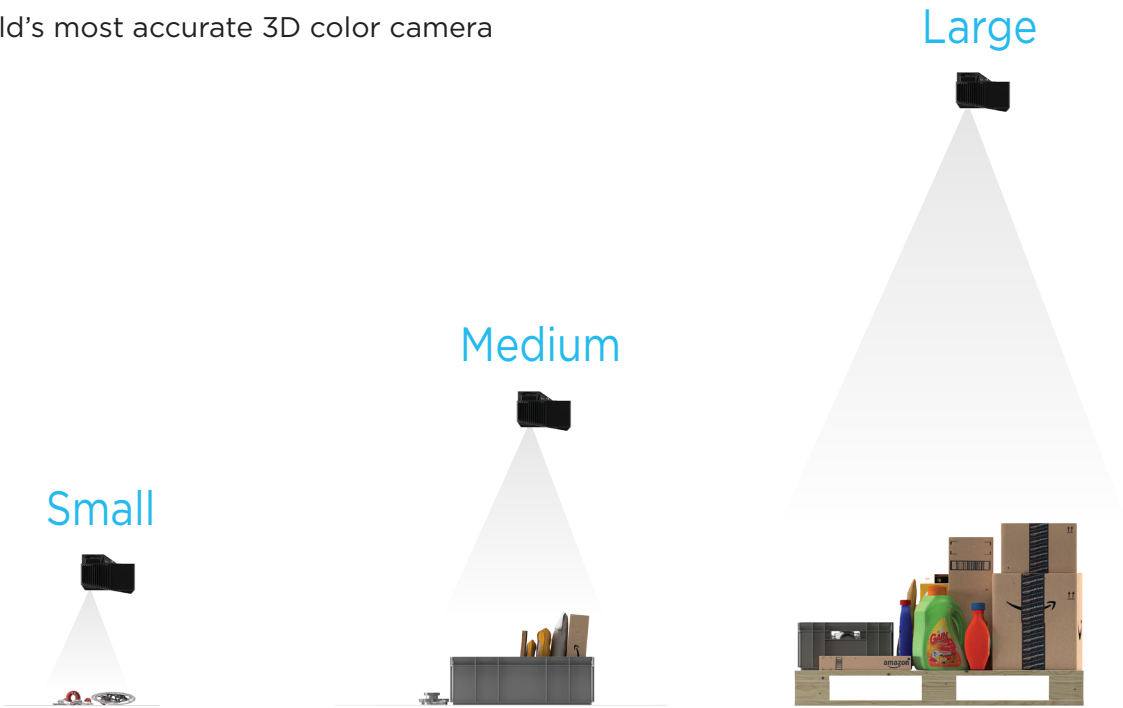
sales@zivid.com

Order Zivid One Plus

[www.zivid.com/order](http://www.zivid.com/order)

Zivid One+

The world's most accurate 3D color camera



3D IMAGING WITHOUT COMPROMISES

Excellent data quality in HD with 25  $\mu$ m point precision and > 99% dimension accuracy. No compromise between speed and resolution.

HANDLES YOUR MATERIALS

Capture high quality 3D images of even the most challenging industrial objects. Reflective metallic, black and absorbing or partly translucent materials.

HD AND FULL COLOR

Point cloud data (XYZ) and vivid RGB colors captured with the same sensor chip. One-to-one correspondence between color and depth.

READY TO USE

Factory calibrated 3D camera with and intuitive GUI. Interfaces for machine vision software and a modern and high level API.

SUPPORTS YOUR WORKFLOW



Zivid One+

The world's most accurate 3D color camera