



# Zivid 2<sup>+</sup> User Guide

Revision: 1.2

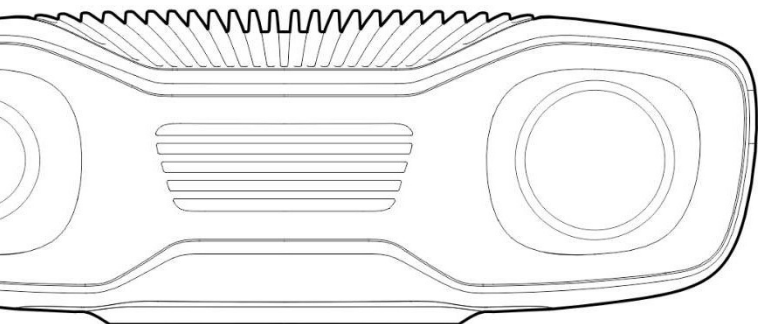
Date: 04/01/2024

Ordering code:

M130 (ZVD2P-M130)

M60 (ZVD2P-M60)

L110 (ZVD2P-L110)



# Table of Contents

<b>1. Regulatory Information</b>	<b>3</b>
1.1 Compliance	3
1.2 Safety Precautions	4
<b>2. Unboxing</b>	<b>5</b>
<b>3. System Requirements</b>	<b>6</b>
<b>4. Mechanical Installation</b>	<b>7</b>
4.1 Working Distance and Field-of-View	7
4.2 Mechanical Interface	9
4.3 Flatness of Mounting Surface	10
4.4 Mounting Accessories	11
4.5 Positioning Correctly	12
In bin-picking applications	13
Cooling clearance	14
Signal protection	14
<b>5. Connectivity and Power Supply</b>	<b>15</b>
5.1 Connectors	15
Factory reset button	15
5.2 Connecting to the Computer	16
5.3 Network Topology	17
Direct connection	17
Connection via switch	17
5.4 Network Configuration	18
Requirements	18
Default configuration	18
Windows	19
Ubuntu	19
<b>6. Software</b>	<b>20</b>
<b>7. Support and Troubleshooting</b>	<b>21</b>
<b>8. Service and Maintenance</b>	<b>22</b>
<b>9. About Zivid</b>	<b>23</b>

# 1. Regulatory Information

## 1.1 Compliance

The Zivid 2+ camera is compliant with EN 62368, FCC class B, Canada ICES-003 (B) / NMB-003 (B), KC, CE, and CB environmental standards.

This device complies with part 15 of the FCC Rules. Operation is subject to the following two conditions: (1) This device may not cause harmful interference, and (2) this device must accept any interference received, including interference that may cause undesired operation.

Changes or modifications not expressly approved by the party responsible for compliance could void the user's authority to operate the equipment.

### Note

This equipment has been tested and found to comply with the limits for a Class B digital device, pursuant to part 15 of the FCC Rules. These limits are designed to provide reasonable protection against harmful interference in a residential installation.

This equipment generates, uses and can radiate radio frequency energy and, if not installed and used in accordance with the instructions, may cause harmful interference to radio communications. However, there is no guarantee that interference will not occur in a particular installation.

If this equipment does cause harmful interference to radio or television reception, which can be determined by turning the equipment off and on, the user is encouraged to try to correct the interference by one or more of the following measures:

- Reorient or relocate the receiving antenna.
- Increase the separation between the equipment and receiver.
- Connect the equipment into an outlet on a circuit different from that to which the receiver is connected.
- Consult the dealer or an experienced radio/TV technician for help.

Connections and assembly must be performed by competent technicians. Do not connect external I/O signals to the device while it is powered; this may damage the device.

## 1.2 Safety Precautions

Transport the device in its original packaging or make sure it is properly cushioned during transportation.

The Zivid 2+ camera is tested against IEC 62471-5:2015 and is classified as Risk Group 2. IEC 62471 classifies optical radiation sources based on the level of hazard to the skin and eye. As with any bright light source, do not stare into the beam.

**CAUTION** | Do not stare into the beam, RG2

## 2. Unboxing



### In the Zivid box you will find:

- Zivid 2+ 3D camera
- 24 V power supply

### Optional/as ordered:

- Power cables (straight connector), available in 5 m, 10 m and 20 m
- Power extension cables (angled connector), available in 3 m
- Ethernet (CAT-6A) cables (straight connector), available in 5 m, 10 m and 25 m
- Ethernet (CAT-6A) extension cables (angled connector), available in 3 m
- Calibration Board
- Mount of choice (Stationary Mount or On-Arm Mount)
- Tripod Adapter

All accessories can be ordered separately.

### 3. System Requirements

OS	Windows 10/11 or Linux Ubuntu 20.04/22.04 <sup>1</sup>
GPU	<p>Dedicated GPU</p> <p>A dedicated GPU gives the best performance with Zivid. It is also the best choice if the GPU will be used for more than Zivid's computations. A medium to high-end NVIDIA GPU with at least 3 GB of memory is required for optimal performance. This is the preferred solution for Zivid.</p> <p>Recommendations:</p> <ul style="list-style-type: none"><li>• NVIDIA GeForce GTX 1060 or better</li><li>• NVIDIA GeForce MX150 or better</li></ul>
GPU	<p>CPU with integrated GPU</p> <p>This is the most cost-efficient solution for Zivid. The benefit of an integrated GPU is that the data transfer from GPU to CPU is fast. It is also beneficial for applications that require low power consumption, e.g., battery-powered mobile platforms. A high-end integrated GPU with at least 3 GB of memory available is required for optimal performance.</p> <p>Recommendations:</p> <ul style="list-style-type: none"><li>• Intel i7 with HD630 or better</li></ul>
Ethernet	<p>Full performance:</p> <p>10GBASE-T (10G Copper Ethernet) adapter connected via PCI Express or Thunderbolt 3.</p> <p>Reduced performance:</p> <p>1000BASE-T and NBASE-T (1G, 2.5G and 5G copper) connections</p> <p>Recommendations:</p> <ul style="list-style-type: none"><li>• ASUS XG-C100C 10G Network Adapter PCI-E x4 Card</li><li>• QNAP QNA series Thunderbolt 3 to 10GbE Adapter</li></ul>

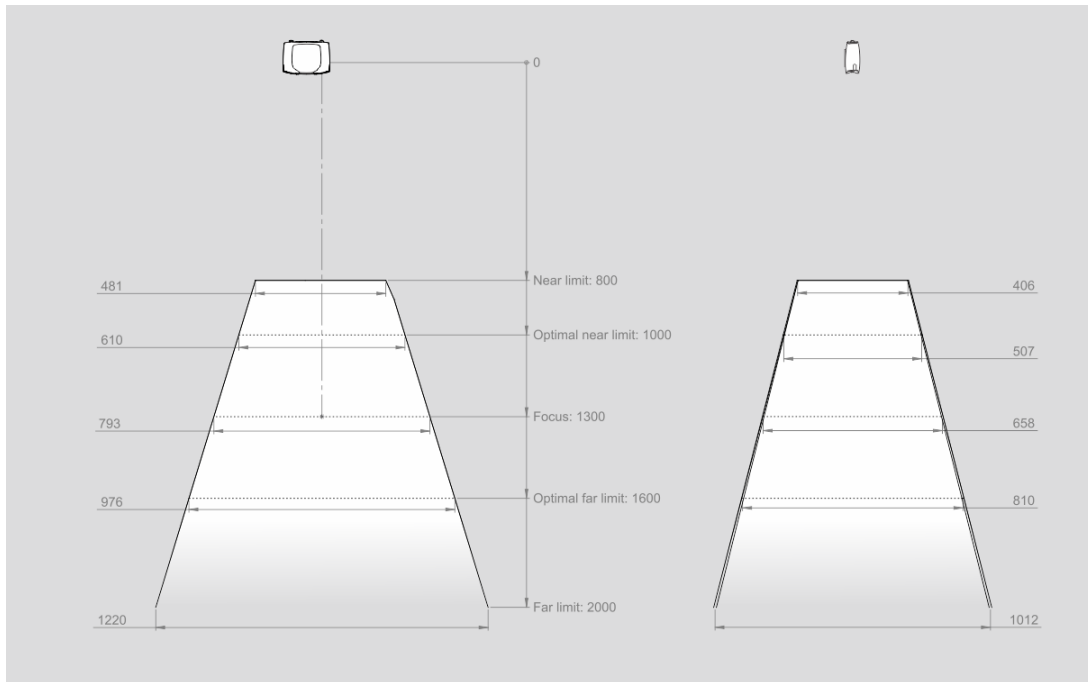
---

<sup>1</sup>Support for Ubuntu 18.04 is removed since SDK 2.10.

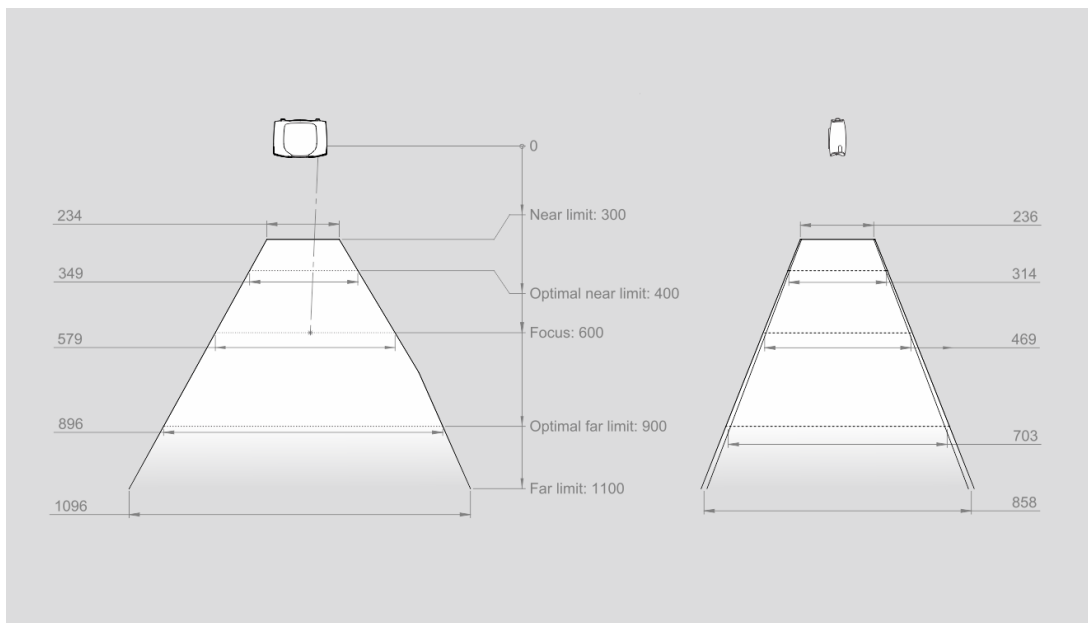
## 4. Mechanical Installation

### 4.1 Working Distance and Field-of-View

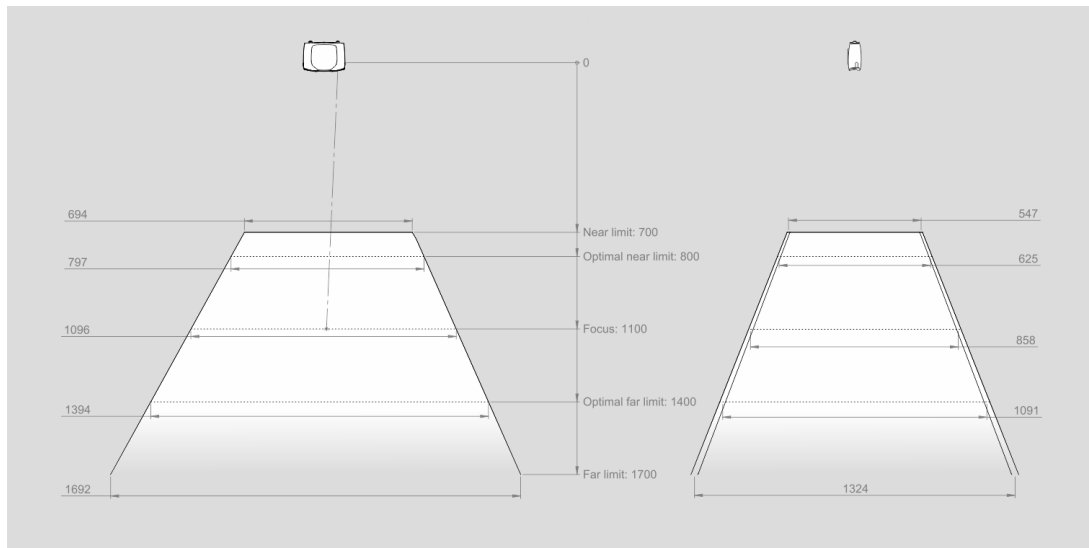
Zivid 2<sup>+</sup> M130



Zivid 2<sup>+</sup> M60



## Zivid 2<sup>+</sup> L110





## 4.2 Mechanical Interface

The Zivid 2<sup>+</sup> camera has three M5 mounting holes, one Ø5 positioning hole, and one Ø5x1 obround alignment hole. We recommend using DIN 912 / ISO 4762 Hexagon or ISO 14579 Hexalobular socket head cap screws in stainless steel (A2 or A4). To ensure not to damage the threads, we recommend not exceeding the specified maximum torque value when fastening the screws.



### **Note**

The camera must be completely still during the acquisition to deliver the specified 3D image quality. Otherwise, it is completely safe to move it, e.g. when mounted on a robot or any other moving platform.

### 4.3 Flatness of Mounting Surface



For optimal performance we recommend a mounting surface flatness of  $\pm 0,05$  mm or better. Mounting the camera to an uneven surface can in some cases affect the calibration.

We recommend using one of the Zivid Camera Mounts to ensure problem free installation of the camera.

## 4.4 Mounting Accessories



Mounting accessories can be ordered at:

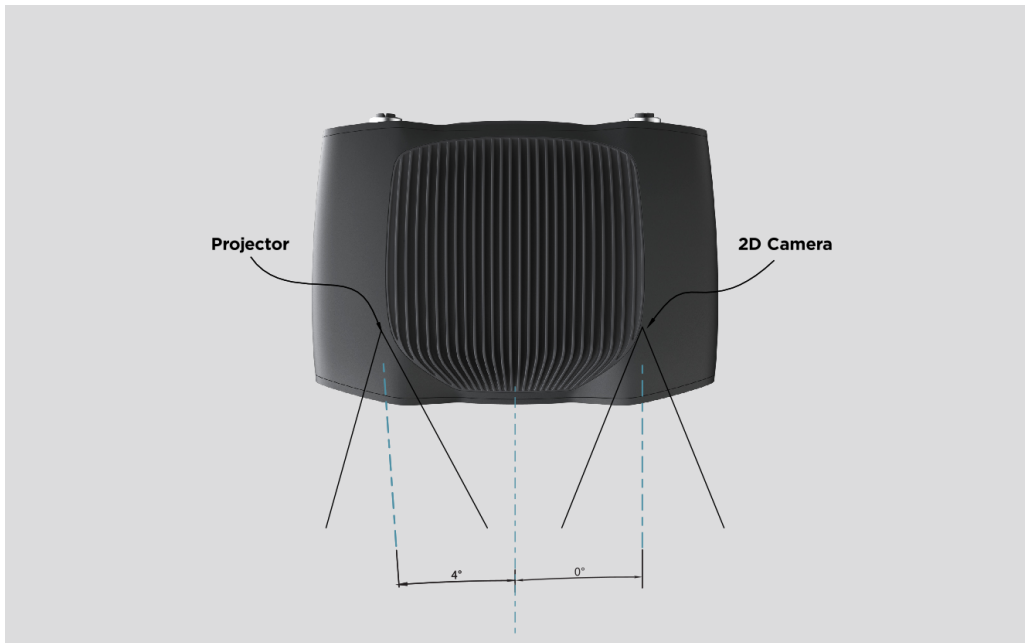
[shop.zivid.com](https://shop.zivid.com)



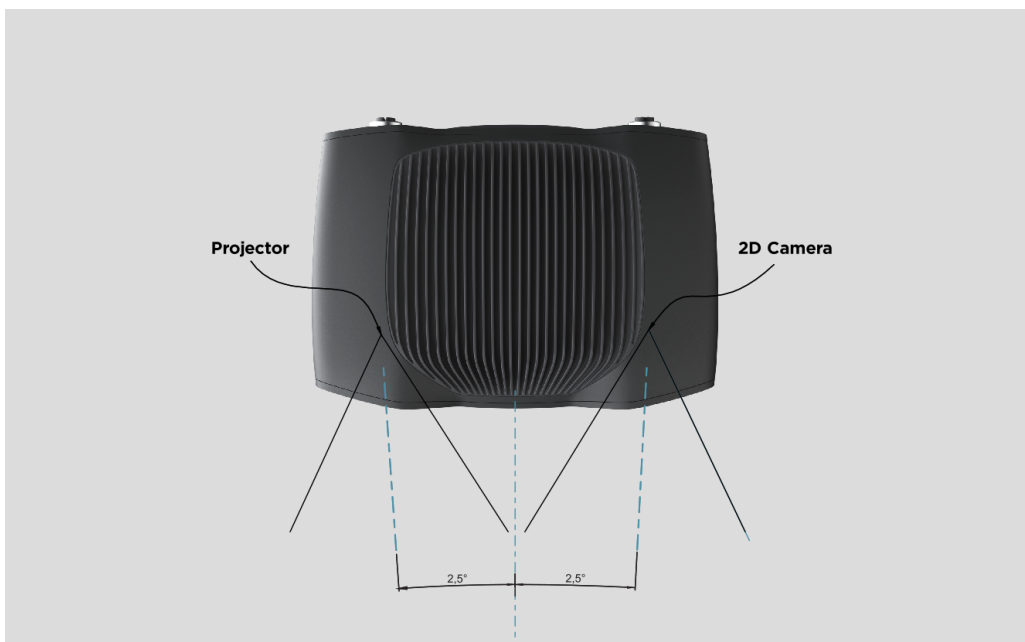
## 4.5 Positioning Correctly

The 2D camera and the projector have an angle with respect to the center axis. This should be considered if it is desired to have the camera perpendicular to the scene.

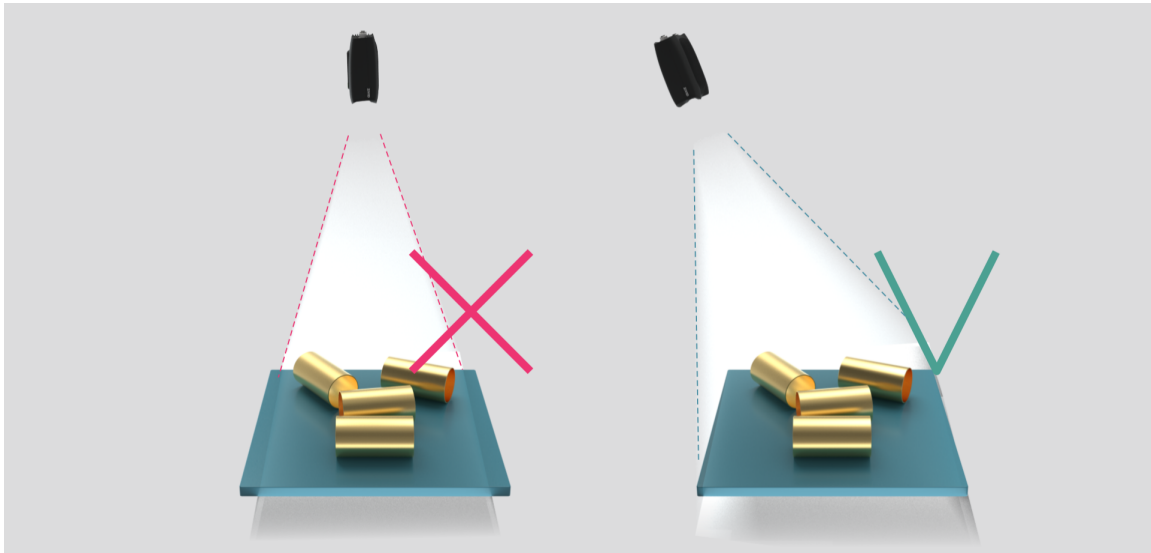
Zivid 2<sup>+</sup> M130



Zivid 2<sup>+</sup> M60 and L110



If possible, mount the camera at a slight tilt angle to avoid reflections and interference from the background. This also frees up space above the scene for easier access for tools and robots.



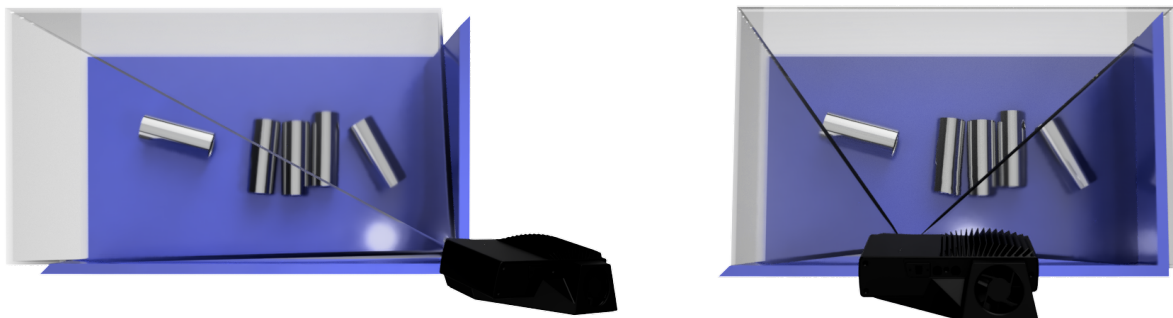
Ambient light might reduce performance. Consider blocking direct light affecting the scene.

#### **Note**

Camera tilting is more important if the scene contains specular surfaces.

### **In bin-picking applications**

For bin-picking applications, place the Zivid camera projector above the back edge or above the rear corner of the bin (see images below). Pan and tilt it so that the 2D camera is looking at the bin center. The projector rays should not fall on the inner surfaces of the two walls closest to the projector; they should almost be parallel to those two walls. Mounting the camera this way minimizes interreflections from the bin walls.



## **Cooling clearance**

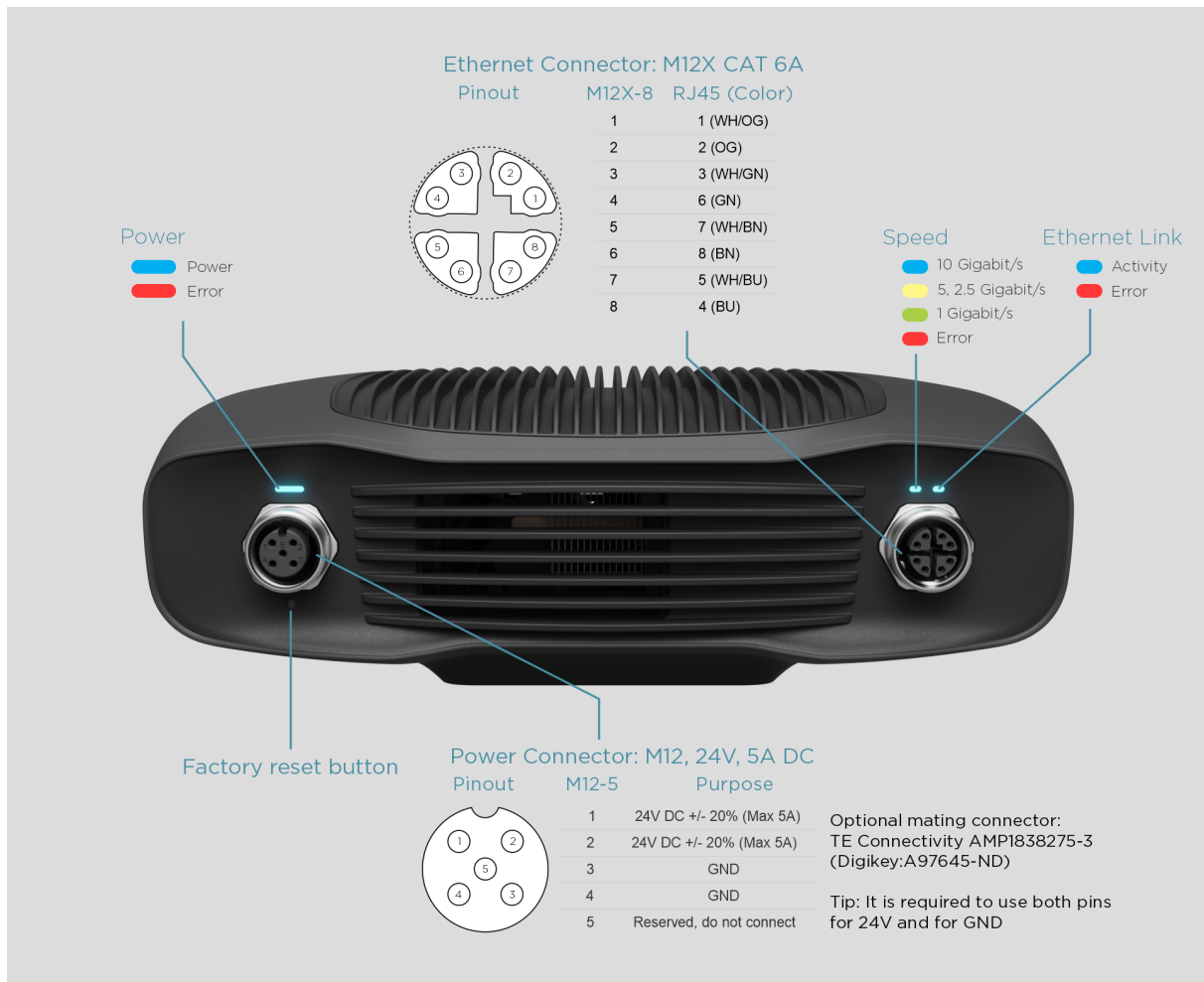
Zivid cameras use active and passive cooling, allow some space around the device for airflow, and do not block the air opening on its front and rear sides. Advise the technical specifications for the operating temperature range for your camera.

## **Signal protection**

Do not install Zivid cameras and cables next to high voltage devices that can generate high levels of electromagnetic disturbance. Do not route camera cabling through the same trunks/conduits with AC power cables and cables emitting high levels of disturbance.

## 5. Connectivity and Power Supply

### 5.1 Connectors



#### Factory reset button

- Reset (power cycle): Intermittent press or hold for less than 5 seconds.
- Reset to factory IP address: Hold for 5 to 10 seconds until the Power LED turns green.
- Revert to factory installed firmware: Hold for more than 10 seconds until the Power LED turns yellow.

## 5.2 Connecting to the Computer

1. Plug the power supply into the “24V” port and into a power outlet.
2. Plug the Ethernet cable into the camera and connect it to your computer.

### Note

Ensure that all connections are screwed in tightly. The coupling nut of the M12 screw connectors can in some cases be hard to screw in. However, when installed correctly they provide a robust and reliable connection.

Use the AC/DC adapter supplied with the unit to ensure compliance with emission and immunity standards.

The Zivid unit is protected against reverse polarity and against overheating by a thermistor that physically removes the power.

The Zivid 2<sup>+</sup> camera uses Ethernet communication and needs 10 Gbps for best performance. Your computer may not have a port for 10 Gigabit Ethernet. In that case, you may connect to it using an adaptor for 10GBASE-T (10 Gbps copper Ethernet) to Thunderbolt 3. At a reduced performance you can also use 1000BASE-T and NBASE-T (1 Gbps, 2.5 Gbps, and 5 Gbps over copper) to USB adapters.

### Caution

USB-based network adapters have reduced and more variable capture speed, and can occasionally give errors when using the camera.

### Caution

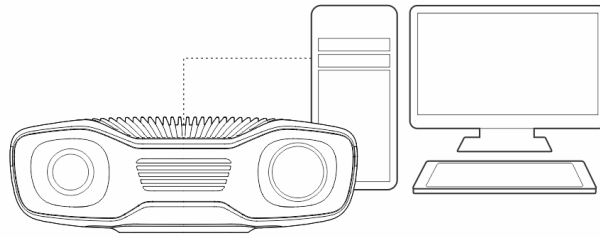
Use only Zivid approved Ethernet cables.



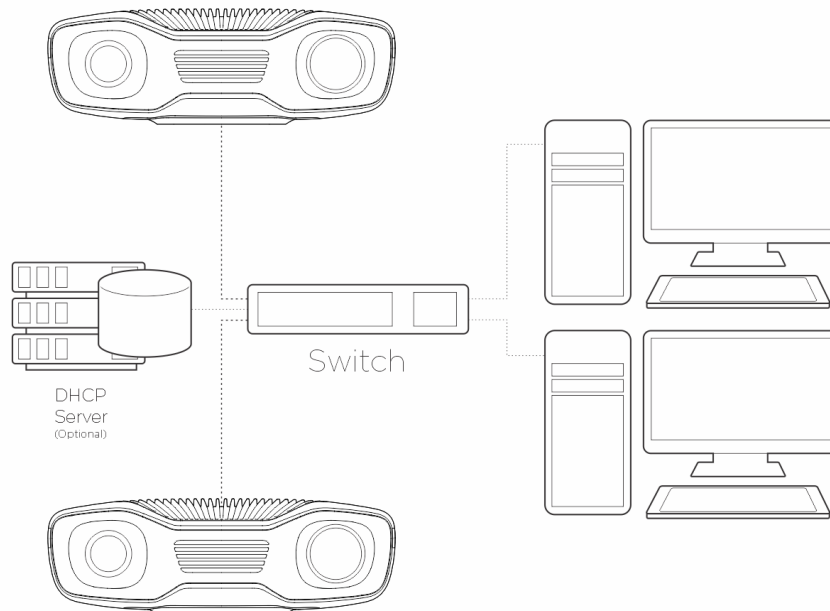
## 5.3 Network Topology

Zivid 2<sup>+</sup> supports the following network topologies:

### Direct connection



### Connection via switch



## 5.4 Network Configuration

The Zivid 2<sup>+</sup> camera uses Ethernet communication and needs 10 Gbps for best performance. Your computer may not have a port for 10 Gigabit Ethernet. In that case, you can connect to it using a Thunderbolt 3 to 10GbE Adapter. At a reduced performance you can also use USB to 5GbE, 2.5GbE, or 1GbE adapters.

### Requirements

Performance	Network	Interface	Connection
Optimal (recommended)	10GbE (10Gbps)	PCIe card	Direct
Very good	10GbE	Thunderbolt Adapter	Direct
Reduced	5GbE or 2.5GbE	PCIe/USB/Thunderbolt Adapter	Direct/Switch
Minimum	1GbE (1Gbps)	PCIe/USB Adapter	Direct/Switch

### Caution

USB-based network adapters have reduced and more variable capture speed, and can occasionally give errors when using the camera.

### Default configuration

	IP	Subnet mask	Gateway	Hostname
Zivid 2 <sup>+</sup>	172.28.60.5	255.255.255.0	172.28.60.1	zivid-<serial number>
Possible PC	172.28.60.2 <sup>1</sup>	255.255.255.0	172.28.60.1	

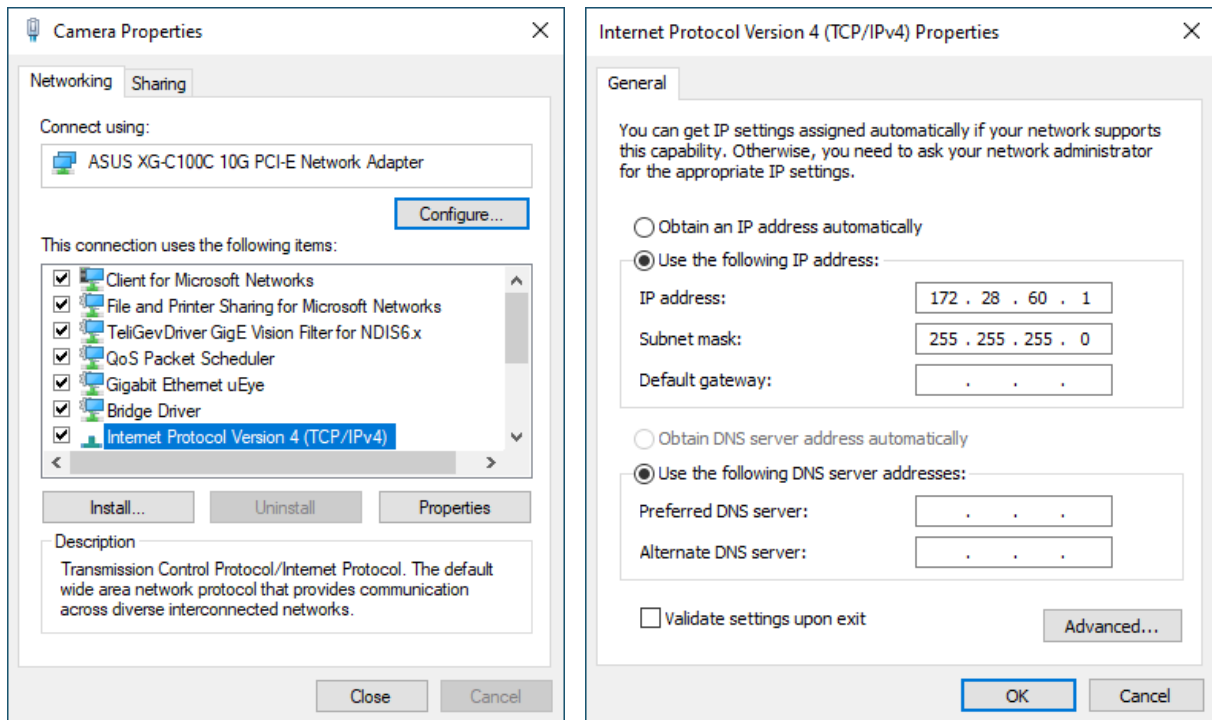
In order to use the camera with the default IP address your PC's IP address must be in the same subnet, as listed in the table above.

---

<sup>1</sup>Any IP address in the subnet range is valid, except the network address (172.28.60.0) and the broadcast address (172.28.60.255). We also choose to avoid the gateway IP (172.28.60.1), even though we don't currently require a gateway.

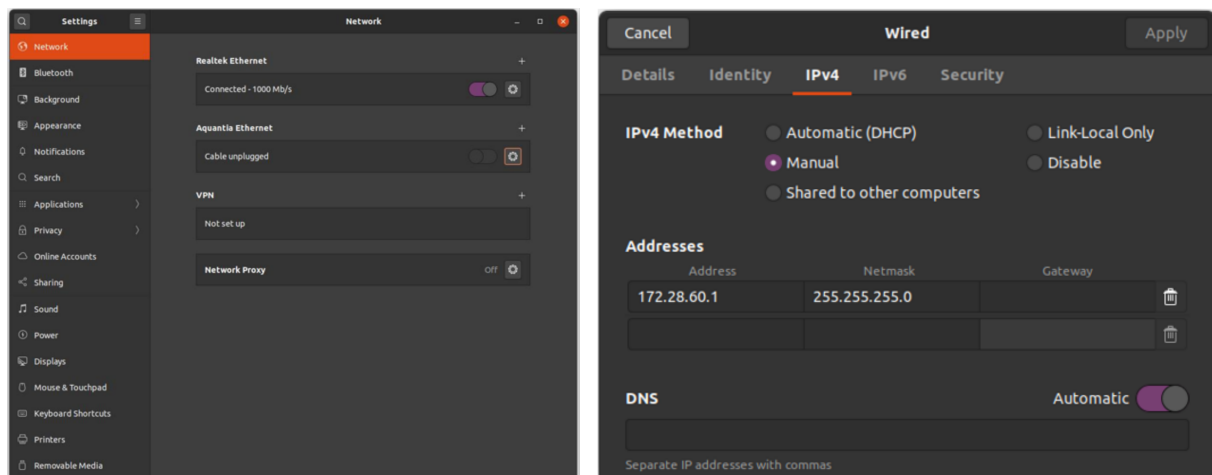
## Windows

Right click on your network connection and chose Properties.



## Ubuntu

Set up the network configuration in the IPv4 tab.



For complete Zivid 2<sup>+</sup> network configuration instructions, navigate to:  
[support.zivid.com/getting-started/software-installation/zivid-two-network-configuration.html](https://support.zivid.com/getting-started/software-installation/zivid-two-network-configuration.html)

## 6. Software

To download the latest software for your camera, navigate to:

[www.zivid.com/download-software](http://www.zivid.com/download-software)



Visit the Knowledge Base for the installation guide, and then navigate to the Zivid Studio user guide to learn how to capture your first point clouds:

[support.zivid.com](http://support.zivid.com)

## 7. Support and Troubleshooting

For more information, visit:

[support.zivid.com](https://support.zivid.com)



The Zivid Knowledge Base provides answers for commonly seen issues and questions related to Zivid products, for both software and hardware. You will also find in depth articles about our camera technology, best use practices, different types of 3D imaging methods and structured light, to get a better understanding for how to use this product.

## 8. Service and Maintenance

The device contains no user-serviceable parts inside. The product warranty will be void if opened.

Follow the below instructions to ensure that your Zivid camera is well maintained:

- Check screw connections and connectors at regular intervals.
- Do not block the air opening on the front and rear sides of the product.
- The unit uses active and passive cooling, allow some space around the device for airflow.
- Use a small vacuum cleaner or a small canister of compressed air to remove dust or other accumulated particles from the glasses or in between the ribs of the heat sink.
- Regularly clean optical glass parts of the device.
- Check and update the calibration on a yearly basis by performing Infield Correction (and Hand-Eye Calibration) when necessary.

## 9. About Zivid

Zivid is a market-leading provider of 3D machine vision cameras and software for next generation robotics and industrial automation systems. Its Zivid 2+, Zivid 2, and Zivid One+ products are regarded as the world's most accurate real-time 3D color cameras and bring human-like vision to the smart factories and warehouses of Industry 4.0.

To find out more about Zivid, visit:

[www.zivid.com](http://www.zivid.com)



### Email

Technical support: [customersuccess@zivid.com](mailto:customersuccess@zivid.com)

Sales: [sales@zivid.com](mailto:sales@zivid.com)

General: [info@zivid.com](mailto:info@zivid.com)

### Phone

Zivid HQ-Oslo, NO | +47 21 02 24 72

Zivid Sales-Stuttgart, DE | +49 151 72 939 674

Zivid Sales-Austin, TX, US | +1 (847) 345-7691

Zivid Sales-Xiamen, CN | +86 139 5012 9074

Zivid Sales-Seoul, KR | +82 10 8984 5350

Zivid  
Gjerdrums vei 10A  
0484  
Oslo, Norway

©04/01/2024, Zivid. All rights reserved. Subject to change without notice.

